



Innovative Valve Technology

NuSource is the exclusive worldwide provider of ASME Code and safety-related Swagelok® valves for the commercial nuclear power industry.

Swagelok nuclear and safety-related valves:

- 50 series lift check valves
- N series union-bonnet needle valves
- CP and CA series in-line check valves
- V series instrument manifolds
- UW series bellows valves
- Three-piece and trunion style ball valves



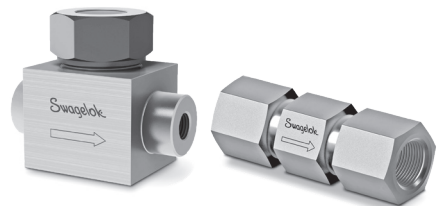
Ask us about providing other safety-related Swagelok valves.

The NuSource and Swagelok unique agreement allows the nuclear power industry to procure “like for like” legacy Swagelok replacement valves from NuSource while Swagelok continues to perform the manufacturing.

Quality, Reliability, Safety.

Swagelok has been a supplier of code compliant products to the nuclear industry for decades. Many Swagelok components meet the nuclear industry codes and standards that you require, including:

- 10CFR50 Appendix B/10CFR21
- ASME Section III—N, NPT, NA
- ASME B16.34, B31.1, QME-1
- ASME NQA-1, ANSI N45.2 and daughter standards
- CSA Z299



THE NUSOURCE QUALITY ASSURANCE PROGRAM MEETS THE HIGHEST STANDARDS IN THE FIELD, INCLUDING 10CFR50 APPENDIX B AND THE ASME BOILER AND PRESSURE VESSEL CODE “N” STAMP.

10CFR50 Appendix B - ASME NQA-1 - ANSI N45.2 - 10CFR 21
 ✓ NIAC Audited ✓ NUPIC Audited



Contact Waylon Waters
 Office: (571) 482-7404
 Direct: (810) 223-4483
wwaters@NuSourceLLC.com

NuSource is an MPR | Gaviel Company
 All Rights Reserved © NuSource LLC

© 2020 Swagelok Company. www.swagelok.com

320 King Street
 Alexandria, VA 22314
NusourceLLC.com