



# Innovative Valve Technology

NuSource is the exclusive worldwide provider of ASME Code and safety-related Swagelok® valves for the commercial nuclear power industry.

## Swagelok nuclear and safety-related valves:

- 50 series lift check valves
- N series union-bonnet needle valves
- CP and CPA series in-line check valves
- V series instrument manifolds
- UW series bellows valves
- Three-piece and trunnion style ball valves



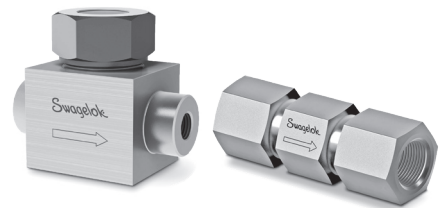
*Ask us about providing other safety-related Swagelok valves.*

The NuSource and Swagelok unique agreement allows the nuclear power industry to procure “like for like” legacy Swagelok replacement valves from NuSource while Swagelok continues to perform the manufacturing.

### Quality, Reliability, Safety.

Swagelok has been a supplier of code compliant products to the nuclear industry for decades. Many Swagelok components meet the nuclear industry codes and standards that you require, including:

- 10CFR50 Appendix B/10CFR21
- ASME Section III—N, NPT, NA
- ASME B16.34, B31.1, QME-1
- ASME NQA-1, ANSI N45.2 and daughter standards
- CSA Z299



THE NUSOURCE QUALITY ASSURANCE PROGRAM MEETS THE HIGHEST STANDARDS IN THE FIELD, INCLUDING 10CFR50 APPENDIX B AND THE ASME BOILER AND PRESSURE VESSEL CODE “N” STAMP.

10CFR50 Appendix B - ASME NQA-1 - ANSI N45.2 - 10CFR 21  
✓ NIAC Audited ✓ NUPIC Audited



Contact Waylon Waters  
Office: (571) 482-7404  
Direct: (810) 223-4483  
wwaters@NuSourceLLC.com

NuSource is an MPR | Gavial Company  
All Rights Reserved © NuSource LLC

© 2020 Swagelok Company. www.swagelok.com

320 King Street  
Alexandria, VA 22314  
NusourceLLC.com